

Good Shepherd Lutheran Church

Project:
Youth + Classroom
Addition/Remodel

Project Architect:
Paul Wheeler

Project Manager:
James Sink

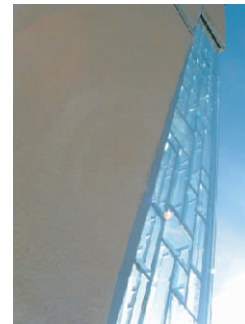
Location:
Towne Avenue
Claremont, CA

Completed:
2003

Client:
Good Shepherd
Lutheran Church

**Construction
Type:**
Addition / Remodel

Contractor:
Bracey Construction
Larry Weed
Stephen Gimpel



Wheeler & Wheeler
ARCHITECTS
133 S. Spring St. Claremont, Ca.
p909 624 5095 f909 621 7757

The Youth and Classroom Addition design began with a strong concept of religious symbolism. The Lutheran's philosophy is that its youth are the driving force of the

Congregation. We interpreted this belief into the idea that the youth room represents the prow of a ship. At its apex is a stained glass cross which serves as a focal point for the

entire Church. The steel awnings cast shadows resembling a wake. This creates strengths their belief that the youth are leading the congregation.